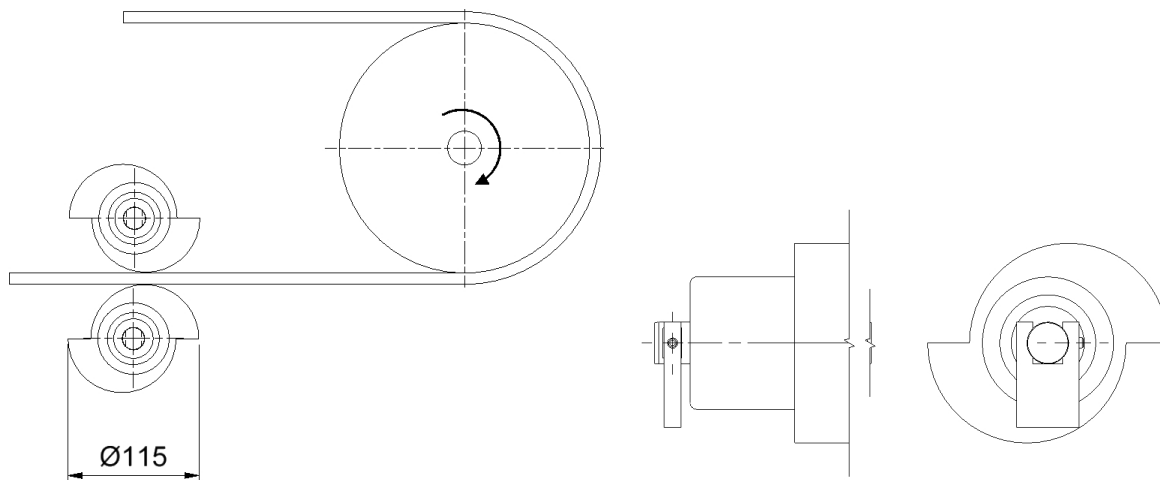


FITTING THE PU STRIKING ROLLER 3500



GENERAL INFORMATION

The PU striking roller is designed to clean chevron belts. The striker sleeves, which are mounted on a return roller, strike the belt 5-7 times a second at normal belt speed (1.2 m/s), resulting in the release of attached particles.

IMPORTANT

In order to achieve the best cleaning results, the following conditions must be met:

Max. belt speed: 1.6 m/s

Max. temperature: + 50°C in wet environments

Max. temperature: + 85°C in dry environments

Max. belt width: 1200 mm

CAUTION

Always turn off the belt conveyor before installing or carrying out maintenance on the striking roller. Make sure that the belt cannot start while this work is in progress.

FITTING

| | |
|----|--|
| 1. | The striking roller is fitted to the underside or upper side of the return run of the conveyor belt, about 1 meters from the drive pulley. |
| 2. | Make and fit two robust holders (thickness 12-15 mm) with slots of width 14 mm and a transverse threaded M8 hole. |
| 3. | Fit the striking roller. Lock the axle of the striking roller in the holder using an M8 Allen screw. |

MAINTENANCE

Inspect the roller regularly ó we suggest once a week.

Check that the roller has not come loose from its holder.

WARRANTY

Damage to the roller caused by incorrect handling or in connection with incorrect installation cannot be considered to be covered by warranty if these instructions have not been followed. We therefore accept no claims for any consequential damage or loss.